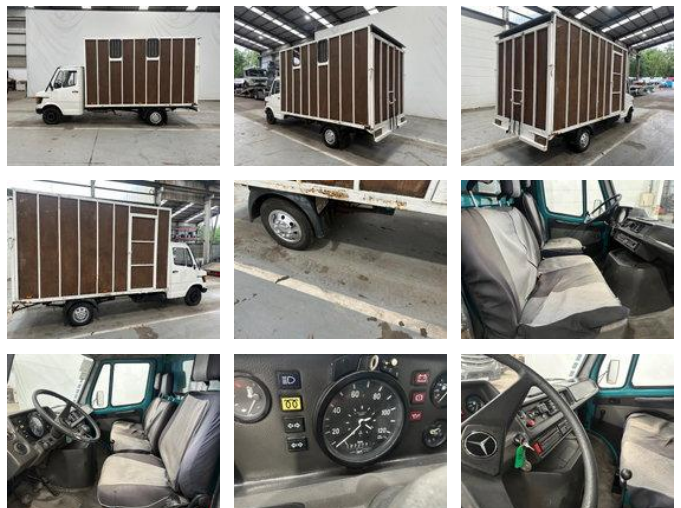


Mercedes-Benz 410 D

General characteristics

Brand	Mercedes-Benz
Subcategory	Box van
Meter reading	193.208km
Year of construction	1989
Date of first registration	15-03-1989
Colour	Wit
Condition	Used
General state	Very good
Fuel	Diesel
Emission class	Euro 1
Reference	SF068171



Properties

Single weight	2.820kg
GVW	3.500kg
Cabin	Nee
Cylinder capacity	2.900cc

Mercedes-Benz 410 D

Technical specifications

Number of axes	2
Axis configuration	4x2
Transmission	Manual transmission
Assets	100hp

Accessories

- Radio/cassette player
- Co-driver's bench
- Hatchback